

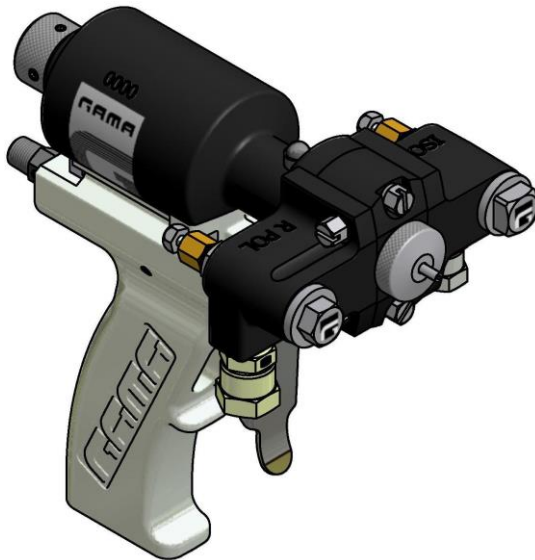


Parts Manual

Spray Gun

Series Master

Issue 5.5 1/24/2022
Ref. NR-00004-ENG



Before starting or carrying out maintenance work on the MASTER gun, please carefully read all the technical and safety documentation included in the Manual Service. It is important to pay special attention to the information contained to see and understand the handling and conditions of use of the gun. This information is aimed at USER SAFETY and the PREVENTION OF PROBLEMS.



WARRANTY

HI-TECH SPRAY EQUIPMENT, S. A. (hereinafter "HI-TECH") grants this Limited Guarantee to the original buyer (hereinafter the "Client") for the unit and the original accessories given with the unit (hereinafter the "Product") against any fault in the design, materials or manufacture of the Product at the time of the first purchase by the user and for a duration of two (2) years thereafter.

If during the guarantee period and under normal conditions of use, the Product should fail to work correctly due to defects of design, material or manufacture, the authorised distributor of the country where the HI-TECH Product or technical assistance service has been purchased shall repair or replace the Product in accordance with what is established in the following:

CONDITIONS

- a) The validity of this guarantee will be subject to the presentation of the original invoice issued by the HI-TECH authorised distributor for the sale of the Product along with the Product handed over for repair or replacement, which must show the date of purchase and the serial number. HI-TECH reserves the right to refuse to give the guarantee service when the indicated data fail to appear on the invoice or have been modified after the purchase of the Product.
- b) The repaired or replaced Product will continue to maintain the original guarantee for the time remaining until the end of the guarantee or for three (3) months from the repair date, if the remaining period of the original guarantee were shorter.
- c) This guarantee will not be applied to the faults in the Product caused by its faulty installation, the natural wear and tear of the components, any use other than that considered normal for this Product or which should fail to strictly comply with the instructions of use provided by HI-TECH; due to accident, carelessness, adjustments, alterations or modifications of the Product not authorised by HI-TECH or due to the use of accessories, heating devices, pumping equipment and/or dispensers that have not been approved or manufactured by HI-TECH.
- d) The guarantee applicable to the components and accessories forming part of the Product and which have not been made by HI-TECH will be limited to the guarantee offered by the original manufacturer thereof.

HI-TECH WILL NOT RECOGNISE ANY EXPRESS ORAL OR WRITTEN GUARANTEES OTHER THAN THIS PRINTED LIMITED GUARANTEE. ALL IMPLICIT GUARANTEES, INCLUDING, WITHOUT LIMIT, ADAPTATION FOR A SPECIFIC USE, ARE SUBJECT TO THE DURATION OF THIS WRITTEN GUARANTEE. HI-TECH DOES NOT ASSUME ANY KIND OF COMMITMENT OR RESPONSIBILITY FOR ALL POSSIBLE DAMAGE OR EXPENSE CAUSED BY FAULTS IN THE OUTPUT OF THE PRODUCT, ITS WORKING OR THE DISPENSING OF MATERIAL THROUGH THE PRODUCT, INCLUDING, WITHOUT LIMITATION, ALL EXPENSES CAUSED BY DAMAGE TO PEOPLE OR PROPERTY. EQUALLY, HI-TECH WILL IN NO CASE ACCEPT LIABILITY FOR THE LOSS OF SPECULATIVE PROFITS OR COMMERCIAL LOSSES. ALL REPAIRS OR REPLACEMENT OF FAULTY PRODUCTS WILL CONSTITUTE THE COMPREHENSIVE FULFILMENT OF HI-TECH'S OBLIGATIONS WITH RESPECT TO THE CLIENT. HI-TECH DOES NOT IN ANY WAY GUARANTEE THE SUITABILITY OR APTITUDE OF ITS PRODUCT FOR ANY PARTICULAR PURPOSE OR APPLICATION.

All information provided on components which have not been manufactured by HI-TECH and which is based on reports received from the original manufacturer, though considered precise and reliable, is provided without any guarantee or responsibility of any explicit or implicit kind.

All concession, sale or financial leasing of the Product by HI-TECH in no case explicitly or implicitly constitutes any authorisation, acceptance or concession for the use of any rights or patents, nor does it encourage, nurture or back their infringement.

The restrictions on the guarantee suppose no limitation on the legal rights of the consumer established in applicable national legislation, nor do they affect any rights derived from the bargain and sale agreement between the consumer and supplier.

All information provided in this manual has been included in the confidence that it is true, although it does not constitute any responsibility or implicit or explicit guarantee. HI-TECH reserves the right at any time and without prior warning to make all improvements and modifications necessary to this manual, in order to rectify any possible typographical errors, increase the information contained or insert the changes caused to the characteristics and performance of the unit.



SAFETY AND HANDLING

The equipment described in this manual has been designed and manufactured in compliance with the following European Directives, following as application guide the harmonized standards detailed and in conformity with the relevant UK Statutory Instruments (and their amendments):

Directive 2006/42/EC on machinery (UK Supply of Machinery (Safety) Regulations 2008)

UNE EN 12100:2012 (BS EN ISO 12100:2010)

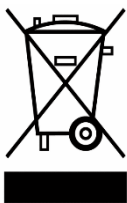
UNE EN 1953:2013 (BS EN 1953:2013)

Directive 2014/68/EU on pressure equipment (UK Pressure Equipment (Safety) Regulations 2016)

UNE EN 809:1999 +A1 (BS EN 809:1998 +A1:2009)

Directive 2011/65/EU on the restriction of the use of certain hazardous substances in electrical and electronic equipment with amendment 2015/863/EU (UK The Restriction of the Use of Certain Hazardous Substances in Electrical and Electronic Equipment Regulations 2012)

Directive 2012/19/EU on waste electrical and electronic equipment (UK The Waste Electrical and Electronic Equipment Regulations 2013)



Electrical products cannot be thrown out with the rubbish. They must be taken to a dedicated collection point for an environmentally sound disposal in accordance with local regulations. You must contact your local collective or retailer for information about recycling. Before leaving WEEE at appropriate collection facilities, batteries must be removed and disposed of separately for proper recycling. The packaging materials are recyclable. Dispose of packaging materials in an environmentally sound manner and place them at the disposal of recycling sectors.

TRANSPORT AND STORAGE

Proper precautions must be taken so that the equipment can withstand the effects of transport and storage temperatures between -25°C and $+55^{\circ}\text{C}$ or up to $+70^{\circ}\text{C}$ for short periods that do not exceed 24 hours. Also, appropriate means to prevent damage from moisture, vibrations or shocks must be foreseen.

STANDARD FINAL ASSEMBLY

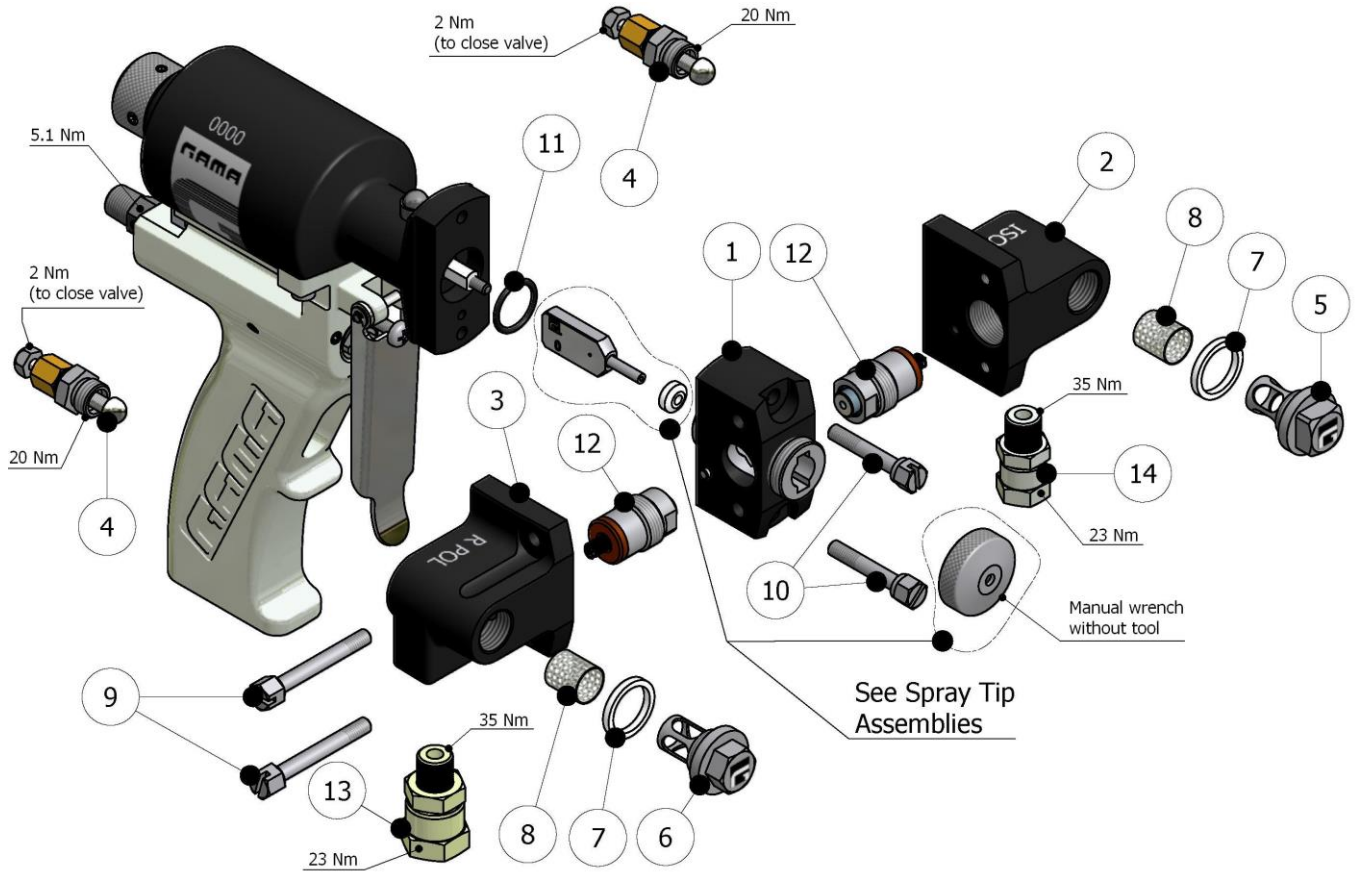


Figure 1. Standard Final Assembly, Exploded View



Table 1. Standard Final Assembly, Parts List

| Item | Description | Part Number | Qty. |
|------|--|--------------|------|
| 1 | Gun Block | GU-02004-00 | 1 |
| 2 | A-Side Block | GU-02005-00 | 1 |
| 3 | R-Side Block | GU-02006-00 | 1 |
| 4 | Manual Valve Assembly | GU-02020-00G | 2 |
| 5 | A-Screen Screw | GU-02017 | 1 |
| 6 | R-Screen Screw | GU-02018 | 1 |
| 7 | Screen Screw Seal | GU-02019 | 2 |
| 8 | Screen-40 Mesh | GU-02063-40 | 2 |
| | Screen-60 Mesh (Optional) | GU-02063-60 | 2 |
| | Screen-80 Mesh (Optional) | GU-02063-80 | 2 |
| 9 | Side Block Bolt | GU-02025 | 2 |
| 10 | Gun Block Bolt | GU-02026 | 2 |
| 11 | O-ring | OR-00025 | 1 |
| 12 | Metallic Seal Kit for Chamber Size 0, 1, 2 & 3 | GU-02031-05 | 2 |
| | Metallic Seal Kit for Chamber Size 4 & 5 | GU-02031-04 | 2 |
| 13 | R-Swivel Fitting | RA-00006 | 1 |
| 14 | A-Swivel Fitting | RA-00005 | 1 |

(OPTIONAL) FINAL ASSEMBLY

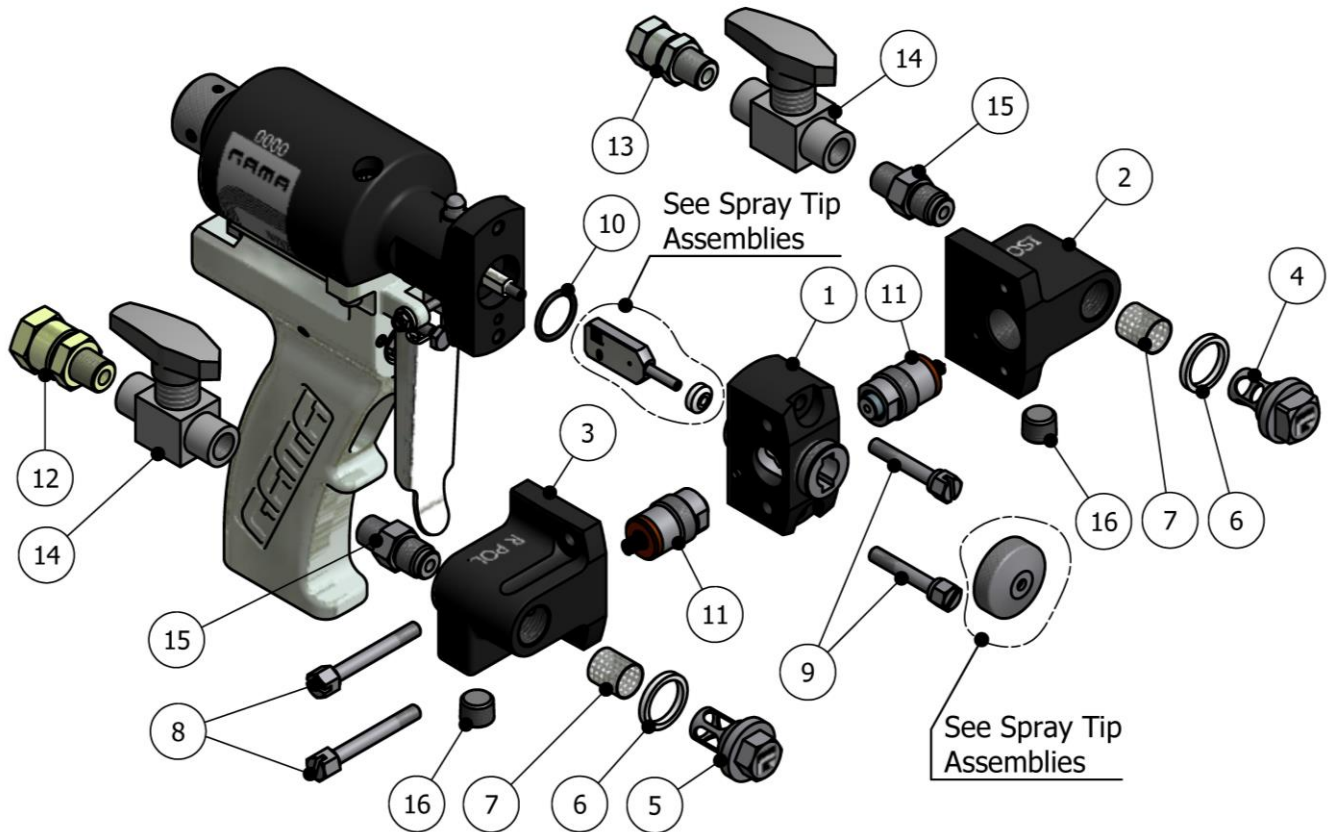


Figure 2. (OPTIONAL) Final Assembly, Exploded View



Table 2. Standard Final Assembly, Parts List

| Item | Description | Part Number | Qty. |
|------|--|-------------|------|
| 1 | Gun Block | GU-02004-00 | 1 |
| 2 | A-Side Block | GU-02005-00 | 1 |
| 3 | R-Side Block | GU-02006-00 | 1 |
| 4 | A-Screen Screw | GU-02017 | 1 |
| 5 | R-Screen Screw | GU-02018 | 1 |
| 6 | Screen Screw Seal | GU-02019 | 2 |
| 7 | Screen-40 Mesh | GU-02063-40 | 2 |
| | Screen-60 Mesh (Optional) | GU-02063-60 | 2 |
| | Screen-80 Mesh (Optional) | GU-02063-80 | 2 |
| 8 | Side Block Bolt | GU-02025 | 2 |
| 9 | Gun Block Bolt | GU-02026 | 2 |
| 10 | O-ring | OR-00025 | 1 |
| 11 | Metallic Seal Kit for Chamber Size 0, 1, 2 & 3 | GU-02031-05 | 2 |
| | Metallic Seal Kit for Chamber Size 4 & 5 | GU-02031-04 | 2 |
| 12 | R-Swivel Fitting | RA-00006 | 1 |
| 13 | A-Swivel Fitting | RA-00005 | 1 |
| 14 | Ball Valve (standard) | RA-00070 | 2 |
| | Ball Valve (High pressure) (*) | RA-00070H | 2 |
| 15 | Adapter | RA-00108-A | 2 |
| 16 | Pipe plug | RA-00004 | 2 |

Note:

(*) Only for high pressure, combined with the Metallic Side Seal Ref. GU-02031-03.

METALLIC SEAL KIT

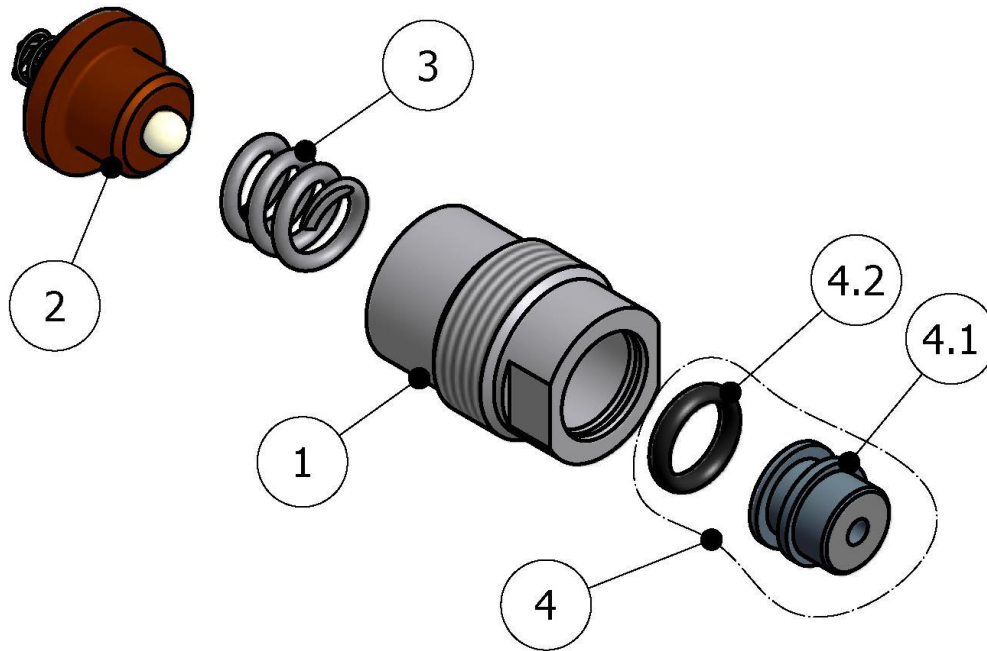


Figure 3. Metallic Seal Kit, Part Number GU-02031-04

Table 3. Metallic Seal Kit, Parts

| Item | Description | Part Number | Qty. |
|------|-----------------------------|-------------|------|
| 1 | Seal body | GU-02031-01 | 1 |
| 2 | Check Valve Assembly | GU-02033-00 | 1 |
| 3 | Spring | SP-00005 | 1 |
| 4 | Side Seal with O-Ring | GU-02049 | 1 |
| 4.1 | Side Seal | GU-02049-02 | 1 |
| 4.2 | O-ring (Included in Item 4) | OR-00024 | 1 |



HANDLE ASSEMBLY

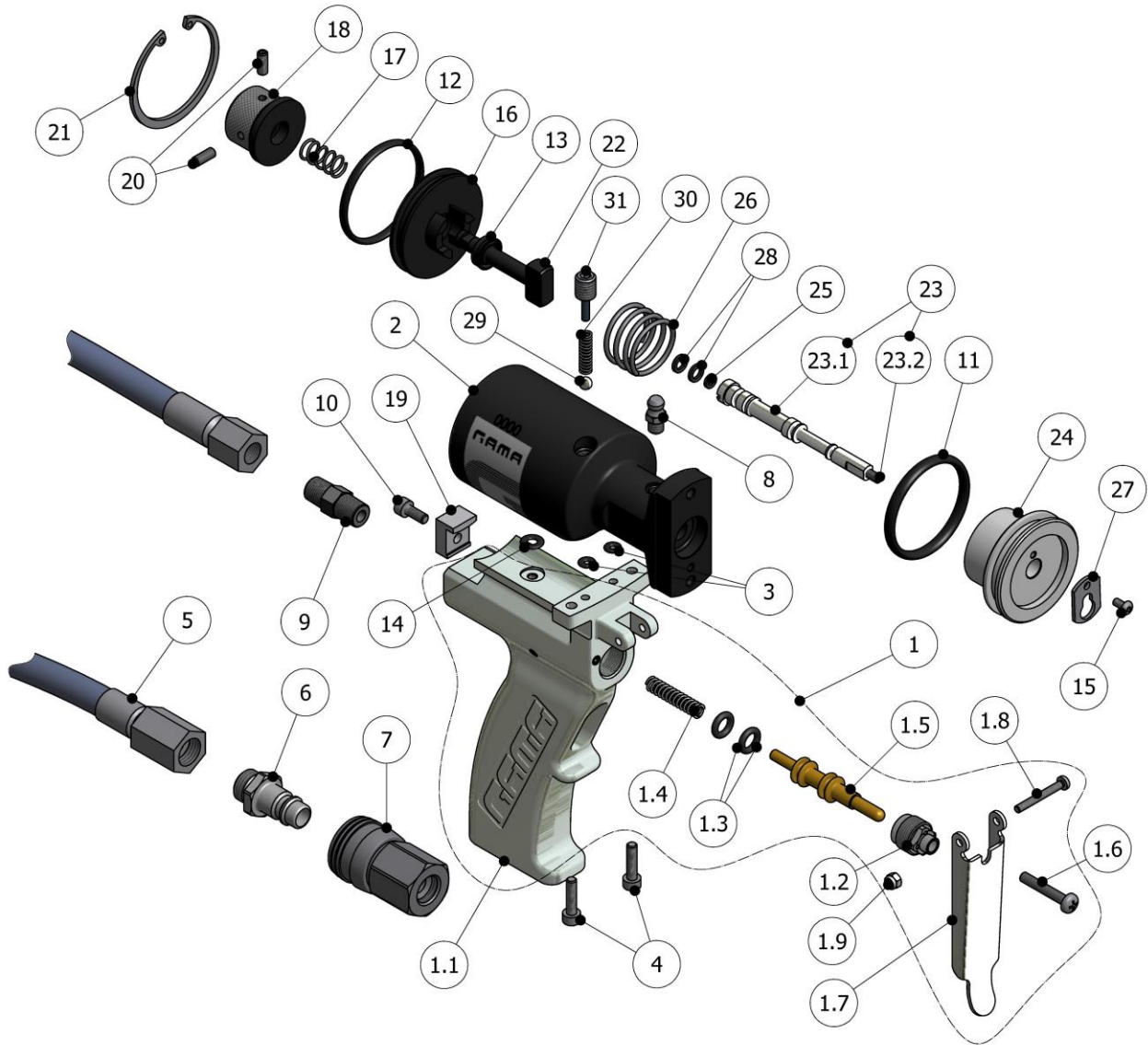


Figure 4. Handle Assembly, Exploded View



Table 4. Handle Assembly, Parts

| Item | Description | Part Number | Qty. |
|------|--|-------------|------|
| 1 | Handle Assy with Trigger | GU-02129-02 | 1 |
| 1.1 | Handle with Plugs (*) | GU-02129-01 | 1 |
| 1.1A | Handle Mechanized and Polished without Plugs (°) | GU-02129-00 | 1 |
| 1.1B | Plugs (°) | TN-00251 | 6 |
| 1.2 | Trigger Valve Nut (*) | GU-02131 | 1 |
| 1.3 | O-Ring (*) | OR-00079 | 2 |
| 1.4 | Trigger Spring (*) | SP-00022 | 1 |
| 1.5 | Trigger Shaft (*) | GU-02130 | 1 |
| 1.6 | Trigger Stop Bolt (*) | TN-00235 | 1 |
| 1.7 | Trigger (*) | GU-02132 | 1 |
| 1.8 | Trigger Screw (*) | TN-00459 | 1 |
| 1.9 | Retention Nut (*) | TN-00460 | 1 |
| 2 | Air Cylinder | GU-02002 | 1 |
| 2.1 | Plug (#) | TN-00251 | 2 |
| 3 | O-Ring | OR-00002 | 2 |
| 4 | Socket Head Cap Screw | TN-00049 | 2 |
| 5 | Hose Air Supply | MA-00027 | 1 |
| 6 | Air Connector | RA-00110 | 1 |
| 7 | Quick Connect Air Supply | RA-00109 | 1 |
| 8 | Grease Fitting | TN-00292 | 1 |
| 9 | Hex. Nipple | RA-00112 | 1 |
| 10 | Socket Head Cap Screw | TN-00002 | 1 |
| 11 | O-Ring | OR-00029 | 1 |
| 12 | O-Ring | OR-00026 | 1 |
| 13 | Collar | OR-00027 | 1 |
| 14 | O-Ring | OR-00024 | 1 |
| 15 | ULS Screw | TN-00458 | 1 |
| 16 | End-Cap | GU-02003 | 1 |
| 17 | Stop Spring | SP-00008 | 1 |
| 18 | Stop Knob | GU-02007 | 1 |
| 19 | Cylinder Clamp | GU-02021 | 1 |



| item. | Description | Part Number | Qty. |
|-------|---------------------------|-------------|------|
| 20 | Screw | TN-00099 | 2 |
| 21 | Retainer Ring | TN-00092 | 1 |
| 22 | Stop Spin | GU-02008 | 1 |
| 23 | Piston Shaft Assembly (@) | GU-02163-00 | 1 |
| 23.1 | Piston Shaft | GU-02163-01 | 1 |
| 23.2 | Screw | TN-00010 | 1 |
| 24 | Piston | GU-02009-01 | 1 |
| 25 | O-Ring | OR-00028 | 1 |
| 26 | Spring | SP-00007 | 1 |
| 27 | Retainer Plate | GU-02163-02 | 1 |
| 28 | O-Ring | OR-00002 | 2 |
| 29 | Ball | TN-00228 | 1 |
| 30 | Spring | SP-00021 | 1 |
| 31 | Stop Ball | GU-02120 | 1 |

(@) Include 2 x item. 28, 1 x ítem. 25, 1x item.23.1 & 1x item. 23.2.

(*) Parts included in item.1

(º) Parts included in item. 1.1

(#) Parts included in item 2

(OPTIONAL) MAGNETIC SWITCH ASSEMBLY

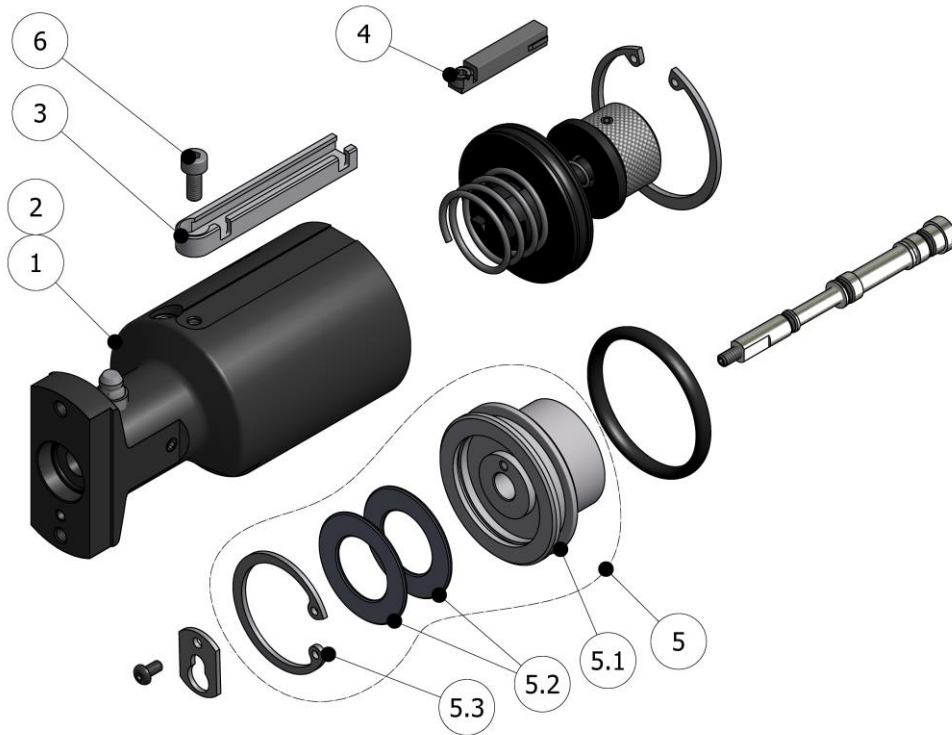


Figure 5. (OPTIONAL) Magnetic Switch Assembly, Exploded View

Table 5. (OPTIONAL) Magnetic Switch Assembly Parts List

| Item | Description | Part Number | Qty. |
|------|---|-------------|-------|
| 1 | Magnetic Switch Air Cylinder for Standard Version | GU-02050 | 1 |
| 2 | Magnetic Switch Air Cylinder for Timer & Auto Version | GU-02050-A | |
| | Plug (#) | TN-00251 | 2+2 |
| 3 | Magnetic Switch Bracket | GU-02051 | 1 |
| 4 | Magnetic Switch with cable 2 m & Square Connector 3p | EL-00136-04 | 1 |
| 5 | Magnetic Piston Assy | GU-02059-00 | 1 |
| 5.1 | Magnetic Piston | GU-02059-01 | 1 (*) |
| 5.2 | Magnet | GU-02034-02 | 2 (*) |
| 5.3 | Seeger Ring | TN-00009 | 1 (*) |
| 6 | Screw | TN-00002 | 1 |

(*) Included in Item 5.

(#) 2 Plugs included in item 1 and 2 Plugs included in item 2

**Table 6. (OPTIONAL) Timer Assembly, Parts List**

| item. | Description | Part Number | Qty. |
|-------|--|--------------|------|
| 1 | Handle Assy with Trigger for Timer | GU-02129-02A | 1 |
| 1.1 | Handle Mechanized and Polished (*) | GU-02129-A0 | 1 |
| 1.2 | Timer Trigger Spring Seat (*) | GU-02135 | 1 |
| 1.3 | Timer Trigger Spring (*) | SP-00023 | 1 |
| 1.4 | Timer Trigger Shaft (*) | GU-02130-A | 1 |
| 1.5 | Cylindrical Head Screw (*) | TN-00020 | 1 |
| 1.6 | Trigger (*) | GU-02132 | 1 |
| 1.7 | Trigger Screw (*) | TN-00459 | 1 |
| 1.8 | Retention Nut (*) | TN-00460 | 1 |
| 1.9 | Trigger Stop Bolt (*) | TN-00235 | 1 |
| 1.10 | Trigger Valve Nut (*) | GU-02131 | 1 |
| 1.11 | Inductive Switch (*) | EL-00136-02 | 1 |
| 1.12 | Cable Switch with Connectors (*) | EL-00136-07 | 1 |
| 2 | Air Cylinder for Timer Version | GU-02002-A | 1 |
| 3 | Magnetic Switch Air Cylinder for Timer Version | GU-02050-A | 1 |
| | Plug (#) | TN-00251 | 2+2 |
| 4 | Kneed Pneumatic Connection | RA-00088 | 3 |
| 5 | Stop Ball | GU-02126 | 1 |
| 6 | Spring | SP-00021-01 | 1 |
| 7 | Ball | TN-00228 | 1 |

N.B.:

Fit the right Air Cylinder for the standard version of the gun with Timer or for the gun with Timer and Switch.

(*) Parts included in item. 1

(#) 2 Plugs included in item 2 and 2 Plugs included in item 3.

(OPTIONAL) AUTOMATIC ASSEMBLY

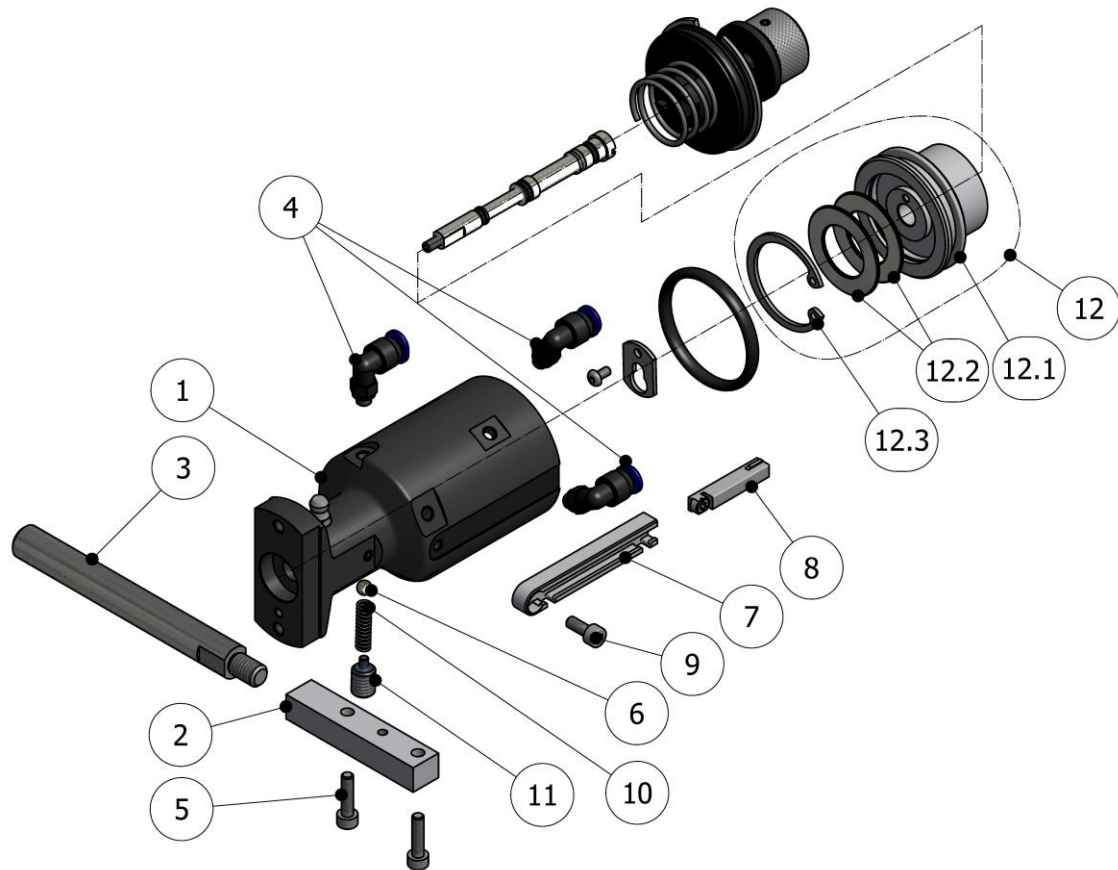


Figure 7. (OPTIONAL) Automatic Assembly



Table 7. (OPTIONAL) Automatic Assembly, Parts List

| Item. | Description | Part Number | Qty. |
|-------|--|-------------|-------|
| 1 | Automatic Air Cylinder with Magnetic Switch | GU-02050-A | 1 |
| 1.1 | Plug (#) | TN-00251 | 2 |
| 2 | Rod Support | GU-02055 | 1 |
| 3 | Connection Rod | GU-02056 | 1 |
| 4 | Elbow | RA-00088 | 3 |
| 5 | Screw | TN-00001 | 2 |
| 6 | Ball | TN-00228 | 1 |
| 7 | Magnetic Switch Bracket | GU-02051 | 1 |
| 8 | Magnetic Switch with cable 2m+Square Connector 3p. | EL-00136-04 | 1 |
| 9 | Srew | TN-00002 | 1 |
| 10 | Spring | SP-00021-01 | 1 |
| 11 | Stop Ball | GU-02126 | 1 |
| 12 | Magnetic Piston Assy | GU-02059-00 | 1 |
| 12.1 | Magnetic Piston | GU-02059-01 | 1 (*) |
| 12.2 | Magnet | GU-02034-02 | 2 (*) |
| 12.3 | Seeger Ring | TN-00009 | 1 (*) |

(*) Included in Item 12.

(#) Included in item 1

ROUND SPRAY PATTERN ASSEMBLY

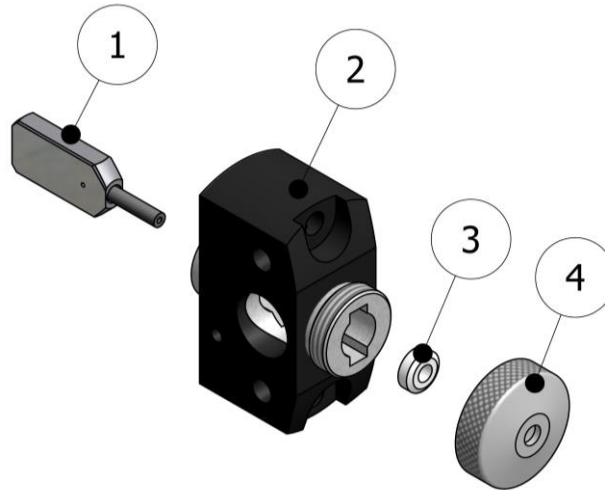


Figure 8. Round Spray Tip Assembly, Exploded View

Table 8. Round Spray Tip Assembly, Parts List

| Item | Description | Part Number | Qty. |
|------|----------------|-------------|------|
| 1 | Mixing Chamber | See Table 9 | 1 |
| 2 | Gun Block | GU-02004-00 | 1 |
| 3 | Air Seal | See Table 9 | 1 |
| 4 | Air Cap | See Table 9 | 1 |



Table 9. Round Tip Assembly, Parts List

| Output (Kg/min.) | Mixing Chamber Item 1 | Air Cap Item 4 | Air Seal Item 3 |
|---------------------|--------------------------|-------------------|--------------------|
| 1,4 – 4,2 | GU-02035 | GU-02028 | GU-02024 |
| 1,5 – 5,3 | GU-02011-0 | GU-02028 | GU-02024 |
| 2,1 – 6,7 | GU-02011-00 | GU-02028 | GU-02024 |
| 3,7 – 10,5 | GU-02012-00 | GU-02028 | GU-02024 |
| 4,6 – 12,7 | GU-02013-00 | GU-02028 | GU-02024 |
| 6,8 – 18,5 | GU-02014-00 | GU-02028 | GU-02024 |
| 8,5 – 19,2 | GU-02015-00 | GU-02029 | GU-02023 |
| 8,5 – 20,2 | GU-02016-00 | GU-02029 | GU-02023 |
| 2,1 – 6,7 | GU-02205 | GU-02028 | GU-02024 |
| 1,5 – 5,3 | GU-02204 | GU-02028 | GU-02024 |

NB: Outputs are approximated, values can change depending on the densities and temperatures of the chemicals.

Test fluid: Mesamoll. Dynamic stickiness: 100-130 mPa.s. Thickness: from 1,04 to 1,07 Kg/L. Pressure 40- 250 bar.

To see the components included in the Round Mixing Chamber Assy, to consult the Table 10.

Table 10. List of Components Included in Round Mixing Chamber Assy

| Size | Chamber Assy | Chamber Item 1 | Clean Drill 1 | Clean Drill 2 | Air Seal Item 3 |
|------|-----------------|-------------------|---------------|---------------|--------------------|
| 000 | GU-02035-00 | GU-02035 | HT-00027 | HT-00079 | GU-02024 |
| 00 | GU-02011-000 | GU-02011-0 | HT-00104 | HT-00023 | GU-02024 |
| 0 | GU-02011-00 | GU-02011 | HT-00062 | HT-00063 | GU-02024 |
| 1 | GU-02012-00 | GU-02012 | HT-00064 | HT-00065 | GU-02024 |
| 2 | GU-02013-00 | GU-02013 | HT-00029 | HT-00062 | GU-02024 |
| 3 | GU-02014-00 | GU-02014 | HT-00030 | HT-00064 | GU-02024 |
| 4 | GU-02015-00 | GU-02015 | HT-00013 | HT-00014 | GU-02023 |
| 5 | GU-02016-00 | GU-02016 | HT-00089 | HT-00030 | GU-02023 |
| A0 | GU-02205-00 | GU-02205 | HT-00066 | HT-00087 | GU-02024 |
| A00 | GU-02204-00 | GU-02204 | HT-00064 | HT-00022 | GU-02024 |



FLAT SPRAY PATTERN ASSEMBLY

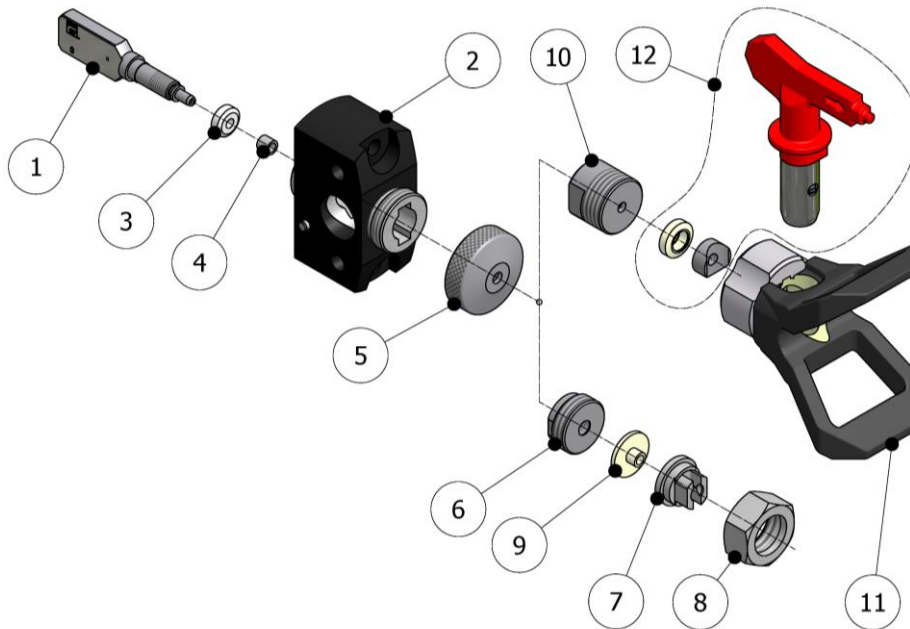


Figure 9. Flat Spray Tip Assembly, Exploded View

Table 11. Flat Spray Tip Assembly, Parts List

| Item | Description | Part Number | Qty. |
|------|---|--------------|------|
| 1 | Mixing Chamber | See Table 12 | 1 |
| 2 | Gun Block | GU-02004-00 | 1 |
| 3 | Air Seal | GU-02022 | 1 |
| 4 | Seal | See Table 12 | 1 |
| 5 | Air Cap | GU-02027 | 1 |
| 6 | PCD Adapter | See Table 12 | 1 |
| 7 | Flat TIP | See Table 16 | 1 |
| 8 | Retaining Nut | GU-02042-01 | 1 |
| 9 | Seal | See Table 12 | |
| 10 | Adapter reversible TIP support (OPTIONAL) | See Table 12 | 1 |
| 11 | Reversible TIP support (OPTIONAL) | GU-05017 | 1 |
| 12 | Reversible TIP (OPTIONAL) | See Table 17 | 1 |

To see the components included in the Flat Mixing Chamber Assy, to consult the Table 13.



Table 12. Parts List According to Production Flat Mixing Chamber

| Standard Flat TIP | | | | | | |
|-------------------|---------------------|------|----------|----------|-------------|-------------|
| Output (Kg/min.) | Mixing Chamber Assy | SIZE | item.1 | item.4 | item.6 | item.9 |
| | | | Chamber | Seal | PCD Adapter | Seal |
| 2,1 – 6,7 | GU-02071-00 | 0 | GU-02071 | - | GU-02090-01 | GU-02041-01 |
| 3,7 – 10,5 | GU-02072-00 | 1 | GU-02072 | - | GU-02090-01 | GU-02041-01 |
| 4,6 – 12,7 | GU-02073-00 | 2 | GU-02073 | - | GU-02090-01 | GU-02041-01 |
| 6,8 – 18,5 | GU-02074-00 | 3 | GU-02074 | - | GU-02090-01 | GU-02041-01 |
| 8,5 – 19,2 | GU-02075-00 | 4 | GU-02075 | GU-02053 | GU-02090-02 | - |
| 8,5 – 20,2 | GU-02076-00 | 5 | GU-02076 | GU-02053 | GU-02090-02 | - |

| Reversible TIP (OPTIONAL) | | | | |
|---------------------------|---------------------|----------------|----------|---|
| Output (Kg/min.) | SIZE Mixing Chamber | Item.1 | Item.4 | Item.10 |
| | | Mixing Chamber | Seal | Adapter reversible TIP support (OPTIONAL) |
| 2,1 – 6,7 | 0 | GU-02071 | GU-02048 | GU-02043-01 |
| 3,7 – 10,5 | 1 | GU-02072 | GU-02048 | GU-02043-01 |
| 4,6 – 12,7 | 2 | GU-02073 | GU-02048 | GU-02043-01 |
| 6,8 – 18,5 | 3 | GU-02074 | GU-02048 | GU-02043-01 |
| 8,5 – 19,2 | 4 | GU-02075 | GU-02053 | GU-02054-01 |
| 8,5 – 20,2 | 5 | GU-02076 | GU-02053 | GU-02054-01 |

NB: Outputs are approximated, values can change depending on the densities and temperatures of the chemicals.

Test fluid: Mesamoll. Pressure 40- 250 bar.

Dynamic stickiness: 100-130 mPa.s.

Thickness: from 1,04 to 1,07 Kg/L



Table 13. List of Components Included in Flat Mixing Chamber Assy

| Size | Chamber Assy | Chamber Item 1 | Clean Drill 1 | Clean Drill 2 | Air Seal Item 3 | Seal Item 4 |
|------|--------------|----------------|---------------|---------------|-----------------|-------------|
| 0 | GU-02071-00 | GU-02071 | HT-00062 | HT-00063 | GU-02022 | - |
| 1 | GU-02072-00 | GU-02072 | HT-00064 | HT-00065 | GU-02022 | - |
| 2 | GU-02073-00 | GU-02073 | HT-00029 | HT-00062 | GU-02022 | - |
| 3 | GU-02074-00 | GU-02074 | HT-00030 | HT-00064 | GU-02022 | - |
| 4 | GU-02075-00 | GU-02075 | HT-00013 | HT-00014 | GU-02022 | GU-02053 |
| 5 | GU-02076-00 | GU-02076 | HT-00089 | HT-00030 | GU-02022 | GU-02053 |

(OPTIONAL) STATIC MIXER ASSEMBLY

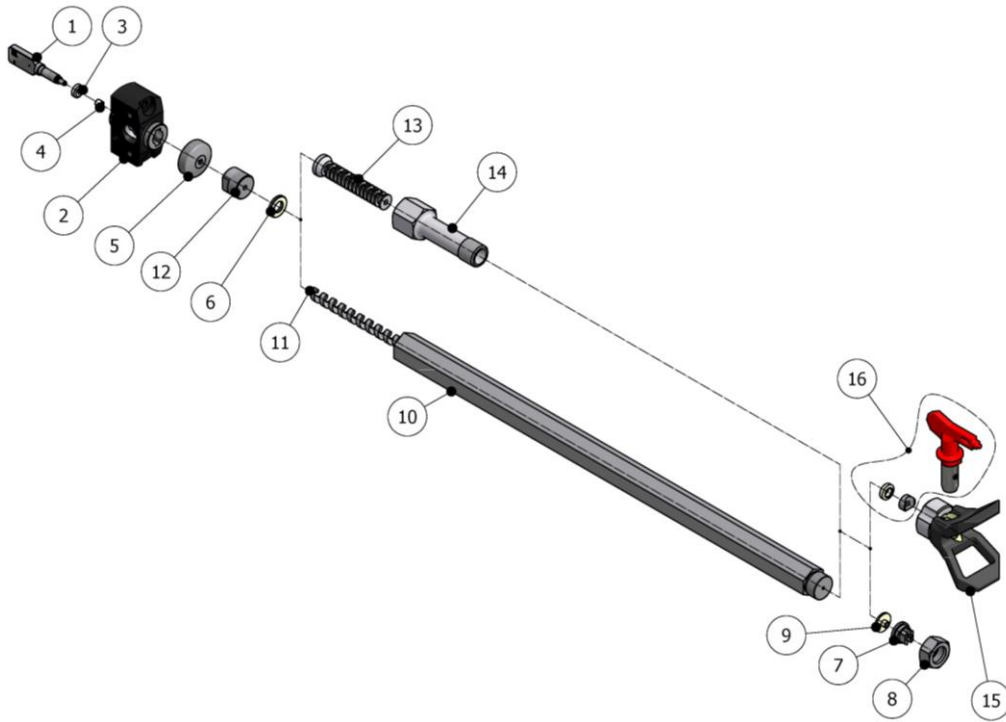


Figure 10. (OPTIONAL) Static Mixer Assembly, Exploded View

Table 14. (OPTIONAL) Static Mixer Assembly, Parts List

| Item | Description | Part Number | Qty. |
|------|-------------------------|--------------|------|
| 1 | Mixing Chamber | See Table 15 | 1 |
| 2 | Gun Block | GU-02004-00 | 1 |
| 3 | Air Seal | GU-02022 | 1 |
| 4 | Seal | See Table 15 | 1 |
| 5 | Air Cap | GU-02027 | 1 |
| 6 | Seal | GU-05019 | 1 |
| 7 | Flat TIP | See Table 16 | 1 |
| 8 | Retaining Nut | GU-02042-01 | 1 |
| 9 | Seal | GU-02041-01 | 1 |
| 10 | Standard Static Chamber | See Table 18 | 1 |
| 11 | Standard Mixing Element | See Table 18 | 1 |

To see the components included in the Flat Mixing Chamber Assy, to consult the Table 13.



| Item | Description | Part Number | Qty. |
|------|--------------------------|--------------|------|
| 12 | Static Mixer Adapter | See Table 15 | 1 |
| 13 | Labyrinth Mixing Element | See Table 19 | 1 |
| 14 | Static Chamber | See Table 19 | 1 |
| 15 | Reversible TIP support | GU-05017 | 1 |
| 16 | Reversible TIP | See Table 17 | 1 |

To see the components included in the Flat Mixing Chamber Assy, to consult the Table 13.

Table 15. Parts List According to Production

| Output (Kg/min.) | SIZE | item.1 | item.4 | item.12 |
|---------------------|------|-------------------|----------|-------------------------|
| | | Mixing Chamber | Seal | Static Mixer Adapter |
| 2,1 – 6,7 | 0 | GU-02071 | GU-02048 | GU-02043-01 |
| 3,7 – 10,5 | 1 | GU-02072 | GU-02048 | GU-02043-01 |
| 4,6 – 12,7 | 2 | GU-02073 | GU-02048 | GU-02043-01 |
| 6,8 – 18,5 | 3 | GU-02074 | GU-02048 | GU-02043-01 |
| 8,5 – 19,2 | 4 | GU-02075 | GU-02053 | GU-02054-01 |
| 8,5 – 20,2 | 5 | GU-02076 | GU-02053 | GU-02054-01 |

NB: Outputs are approximated, values can change depending on the densities and temperatures of the chemicals.

Test fluid: Mesamoll. Pressure 40- 250 bar.

Dynamic stickiness: 100-130 mPa.s.

Thickness: from 1,04 to 1,07 Kg/L

To see the components included in the Flat Mixing Chamber Assy, to consult the Table 13.



Table 16. Standard TIP Sizes

| Standard TIP | Orifice Size mm | Pattern Width cm (*) |
|---------------|-----------------|----------------------|
| GU-02045-1910 | 0.48 | 10 |
| GU-02045-1915 | 0.48 | 15 |
| GU-02045-1920 | 0.48 | 20 |
| GU-02045-1930 | 0.48 | 30 |
| GU-02045-1935 | 0.48 | 35 |
| GU-02045-1940 | 0.48 | 40 |
| GU-02045-1945 | 0.48 | 45 |
| GU-02045-2310 | 0.58 | 10 |
| GU-02045-2315 | 0.58 | 15 |
| GU-02045-2320 | 0.58 | 20 |
| GU-02045-2325 | 0.58 | 25 |
| GU-02045-2330 | 0.58 | 30 |
| GU-02045-2335 | 0.58 | 35 |
| GU-02045-2340 | 0.58 | 40 |
| GU-02045-2720 | 0.69 | 20 |
| GU-02045-2725 | 0.69 | 25 |
| GU-02045-2730 | 0.69 | 30 |

Table 17. Reversible TIP Sizes

| Reversible TIP | Orifice Size mm | Pattern Width cm (*) |
|----------------|-----------------|----------------------|
| GU-05016-2310 | 0.58 | 10 |
| GU-05016-2320 | 0.58 | 20 |
| GU-05016-2340 | 0.58 | 40 |
| GU-05016-2720 | 0.69 | 20 |
| GU-05016-2730 | 0.69 | 30 |
| GU-05016-3520 | 0.90 | 20 |
| GU-05016-3530 | 0.90 | 30 |
| GU-05016-3540 | 0.90 | 40 |

() Values obtained with water to 130 bar of pressure and to 30 cm of the projected surface.*

Delivery times for these elements, consult with the Marketing department.



Table 18. Standard Static Chamber and Mixing Element

| Standard Static Chamber | Standard Mixing Element | Mixing Element Length |
|-------------------------|-------------------------|-----------------------|
| GU-02046-25 | GU-02047-25 | 25 |
| GU-02046-50 | GU-02047-50 | 50 |
| GU-02046-100 | GU-02047-100 | 100 |
| GU-02046-150 | GU-02047-150 | 150 |
| GU-02046-200 | GU-02047-200 | 200 |
| GU-02046-300 | GU-02047-300 | 300 |
| GU-02046-400 | GU-02047-400 | 400 |
| GU-02046-500 | GU-02047-500 | 500 |

Table 19. Static Chamber and Mixing Element

| Length | Static Chamber GU-04045 | Labyrinth Mixing Element GU-04046 | Seal GU-05019 |
|--------|----------------------------|---|------------------|
| 65 | 1x | 1x | 1x |
| 130 | 2x | 2x | 2x |
| 195 | 3x | 3x | 3x |
| 260 | 4x | 4x | 4x |



Table 20. Cleanout Drill Size

| Size | Round Mixing Chamber | Flat Mixing Chamber | Mixing Chamber Nozzle Cleanout Drill Size | Part Number | Mixing Chamber Port Cleanout Drill Seize | Part Number |
|------|----------------------|---------------------|---|-------------|--|-------------|
| 000 | GU-02035-00 | - | 1,000 (0,95) | HT-00027 | 0,700 (0,65) | HT-00079 |
| 00 | GU-02011-000 | - | 1,130 (1,10) | HT-00104 | 0,800 (0,75) | HT-00023 |
| 0 | GU-02011-00 | GU-02071-00 | 1,321 (1,30) | HT-00062 | 0,910 (0,90) | HT-00063 |
| 1 | GU-02012-00 | GU-02072-00 | 1,588 (1,55) | HT-00064 | 1,092 (1,05) | HT-00065 |
| 2 | GU-02013-00 | GU-02073-00 | 1,780 (1,75) | HT-00029 | 1,320 (1,30) | HT-00062 |
| 3 | GU-02014-00 | GU-02074-00 | 2,261 (2,25) | HT-00030 | 1,600 (1,55) | HT-00064 |
| 4 | GU-02015-00 | GU-02075-00 | 2,514 (2,50) | HT-00013 | 1,854 (1,80) | HT-00014 |
| 5 | GU-02016-00 | GU-02076-00 | 3,175 (3,15) | HT-00089 | 2,261 (2,25) | HT-00030 |
| A0 | GU-02205-00 | - | 1,520 (1,50) | HT-00066 | 0,850 (0,80) | HT-00087 |
| A00 | GU-02204-00 | - | 1,600 (1,55) | HT-00064 | 0,600 (0,55) | HT-00022 |

Note:

Diameter of hole, (between parenthesis, drill diameter).



(OPTIONAL) POUR ADAPTER

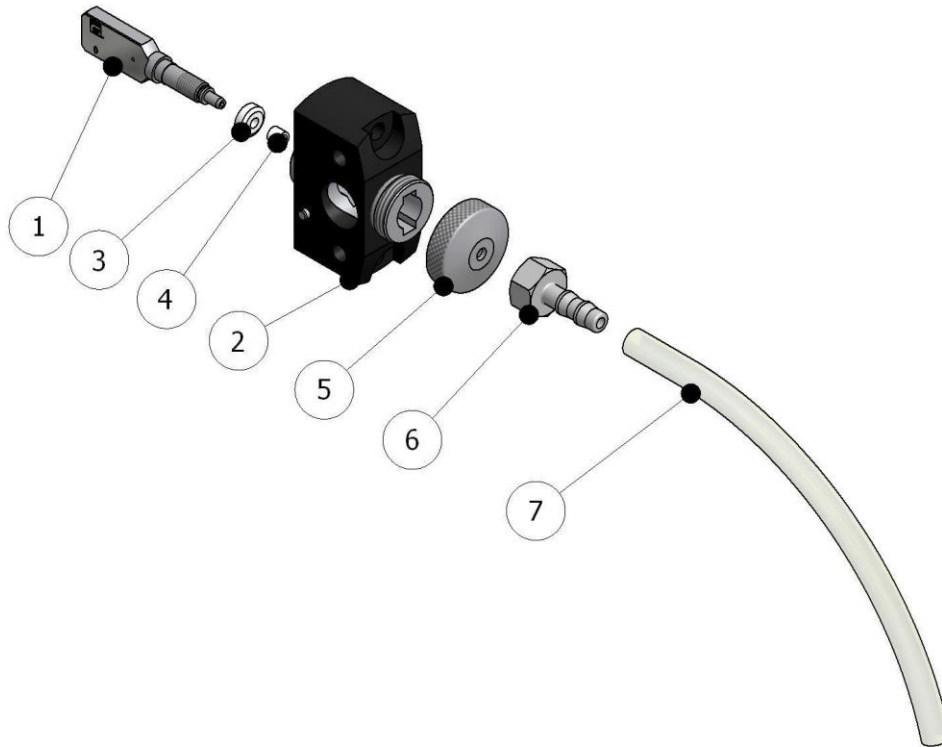


Figure 11. (OPTIONAL) Pour Adapter, Exploded View

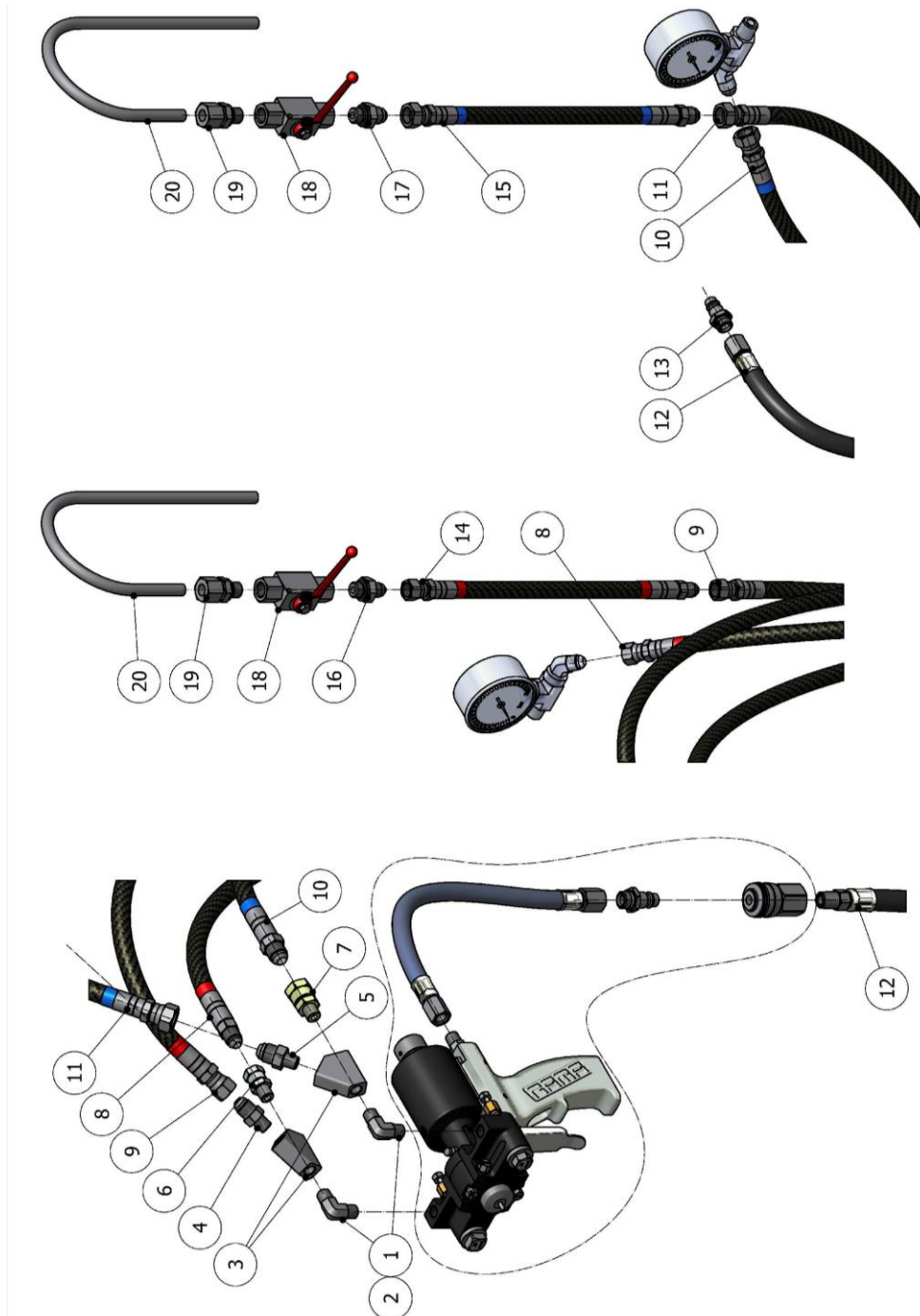
Table 21. (OPTIONAL) Pour Adapter Assembly, Parts List

| Item | Description | Part Number | Qty. |
|------|----------------------------|---------------|------|
| 1 | Mixing Chamber | See Table 15 | 1 |
| 2 | Gun Block | GU-02004-00 | 1 |
| 3 | Air Seal | GU-02022 | 1 |
| 4 | Seal | See Table 15 | |
| 5 | Air Cap | GU-02027 | 1 |
| 6 | Pour Adapter | GU-02094-01 | 1 |
| 7 | Pipe 1/4 " inside diameter | NE-00043-SIZE | 1 |

To see the components included in the Flat Mixing Chamber Assy, to consult the Table 13.

The "SIZE" of item 7 is the wished length of pipe.

(OPTIONAL) RECIRCULATION KIT



**Figure 12. (OPTIONAL) Recirculation Kit, Exploded View
KT-00059-9**



**Table 22. (OPTIONAL) Recirculation Kit, Parts List
KT-00059-9**

| Item. | Description | Part Number | Qty. |
|-------|---|-------------|------|
| 1 | Nipple | RA-00112 | 2 |
| 2 | Elbow | RA-00205 | 2 |
| 3 | Manifold | RA-00464 | 2 |
| 4 | Nipple | RA-00238 | 1 |
| 5 | Nipple | RA-00237 | 1 |
| 6 | Swivel (*) | RA-00005 | 1 |
| 7 | Swivel (*) | RA-00006 | 1 |
| 8 | Flex 10000 mm Supply ISO | MA-00060-3 | 1 |
| 9 | Flex 10000 mm Recirculation ISO | MA-00060-2 | 1 |
| 10 | Flex 10000 mm Supply POL | MA-00059-3 | 1 |
| 11 | Flex 10000 mm Recirculation POL | MA-00059-2 | 1 |
| 12 | Air Hose | MA-00194 | 1 |
| 13 | Air Coupler | RA-00110 | 1 |
| 14 | Flex 1000 mm Recirculation Extended ISO | MA-00177 | 1 |
| 15 | Flex 1000 mm Recirculation Extended POL | MA-00178 | 1 |
| 16 | Nipple | RA-00144 | 1 |
| 17 | Nipple | RA-00145 | 1 |
| 18 | Ball Valve | RA-00217 | 2 |
| 19 | Swivel | RA-00218 | 2 |
| 20 | Tube | MQ-06016 | 2 |
| | Hose Cover 10000 mm | MA-00123 | |
| | Insulating Cover 10000 mm | MA-00099 | |
| | Insulating Cover 8000 mm | MA-00099-1 | |

(*) Parts included in the standard assembly of gun.



CONTENTS

| | |
|-------------------------------------|----|
| Warranty | 2 |
| Safety and Handling | 3 |
| Standard Final Assembly | 4 |
| (OPTIONAL) Final Assembly | 6 |
| Metallic Seal Kit | 8 |
| Handle Assembly | 9 |
| (OPTIONAL) Magnetic switch Assembly | 12 |
| (OPTIONAL) Timer Assembly | 13 |
| (OPTIONAL) Automatic Assembly | 15 |
| Round Spray Pattern Assembly | 17 |
| Flat Spray Pattern Assembly | 19 |
| (OPTIONAL) Static Mixer Assembly | 22 |
| (OPTIONAL) Pour Adapter | 27 |
| (OPTIONAL) Recirculation Kit | 28 |
| Contents | 30 |
| List of Figures | 30 |
| List of Tables | 31 |

LIST OF FIGURES

| | |
|--|----|
| Figure 1. Standard Final Assembly, Exploded View | 4 |
| Figure 2. (OPTIONAL) Final Assembly, Exploded View | 6 |
| Figure 3. Metallic Seal Kit, Part Number GU-02031-04 | 8 |
| Figure 4. Handle Assembly, Exploded View | 9 |
| Figure 5. (OPTIONAL) Magnetic Switch Assembly, Exploded View | 12 |
| Figure 6. (OPTIONAL) Timer Assembly, Exploded View | 13 |
| Figure 7. (OPTIONAL) Automatic Assembly | 15 |
| Figure 8. Round Spray Tip Assembly, Exploded View | 17 |
| Figure 9. Flat Spray Tip Assembly, Exploded View | 19 |
| Figure 10. (OPTIONAL) Static Mixer Assembly, Exploded View | 22 |
| Figure 11. (OPTIONAL) Pour Adapter, Exploded View | 27 |
| Figure 12. (OPTIONAL) Recirculation Kit, Exploded View | 28 |



LIST OF TABLES

| | |
|--|----|
| Table 1. Standard Final Assembly, Parts List | 5 |
| Table 2. Standard Final Assembly, Parts List | 7 |
| Table 3. Metallic Seal Kit, Parts | 8 |
| Table 4. Handle Assembly, Parts | 10 |
| Table 5. (OPTIONAL) Magnetic Switch Assembly Parts List | 12 |
| Table 6. (OPTIONAL) Timer Assembly, Parts List | 14 |
| Table 7. (OPTIONAL) Automatic Assembly, Parts List | 16 |
| Table 8. Round Spray Tip Assembly, Parts List | 17 |
| Table 9. Round Tip Assembly, Parts List | 18 |
| Table 10. List of Components Included in Round Mixing Chamber Assy | 18 |
| Table 11. Flat Spray Tip Assembly, Parts List | 19 |
| Table 12. Parts List According to Production Flat Mixing Chamber | 20 |
| Table 13. List of Components Included in Flat Mixing Chamber Assy | 21 |
| Table 14. (OPTIONAL) Static Mixer Assembly, Parts List | 22 |
| Table 15. Parts List According to Production | 23 |
| Table 16. Standard TIP Sizes | 24 |
| Table 17. Reversible TIP Sizes | 24 |
| Table 18. Standard Static Chamber and Mixing Element | 25 |
| Table 19. Static Chamber and Mixing Element | 25 |
| Table 20. Cleanout Drill Size | 26 |
| Table 21. (OPTIONAL) Pour Adapter Assembly, Parts List | 27 |
| Table 22. (OPTIONAL) Recirculation Kit, Parts List | 29 |